



**Australian Hammer Supplies Hire**  
Unit 3/32 Williamson Road  
Ingleburn  
NSW 2565

## Minor Service

**RP044429**

Customer AUSTRALIAN HAMMER SUPPLIES HIRE Resource Shabaz Muhunned

Contact

Address AUSTRALIAN HAMMER SUPPLIES HIRE  
Unit 3/32 WILLIAMSON RD  
  
INGLEBURN  
2565

Job Type Minor Service  
Reference  
Date 2024-10-21 13:13 - 13:20  
  
Job duration 2:0:00  
Driving duration 00:00:00  
Distance travelled 0 km

Notes AHS129 2250HR SERVICE

Customer/Technician

Resource notes

Replaced engine oil engine oil filter outer air filter  
fuel filter

## Minor Service

**Answer**

**Notes**

Additional notes	yes
Change fuel filter	yes
Change gear oil (litres used)	2
Change oil filter	yes
Change outer air filter	yes
Check hand controls operational	Yes
Check slew (full travel and smooth operation)	Yes
Check the hydraulic motor and the control block for oil leaks.	Yes
Foot pedals (operate correctly)	Yes
Gauges (operate correctly)	Yes



**Australian Hammer Supplies Hire**  
Unit 3/32 Williamson Road  
Ingleburn  
NSW 2565

General check/adjust driver belts	Yes
General inspections/safety checks	yes
General inspections/safety checks	yes
Grease & Lubricate Pins & bushes	Yes
Grease all nipples	yes
Hand controls (operate correctly)	Yes
Handbrake (functional)	yes
Inspect track tension	yes
Inspect/top up coolant (litres used)	0
Meter Reading	2279
Operational inspection controls and safety locks Air conditioner/heater	Yes
Operational inspection controls and safety locks Attachment controls	Yes
Operational inspection controls and safety locks Battery charger rate	Yes
Operational inspection controls and safety locks Engine shut off	Yes
Operational inspection controls and safety locks Engine speed high	Yes
Operational inspection controls and safety locks Engine speed low idle	Yes
Operational inspection controls and safety locks E-STOPS	Yes
Operational inspection controls and safety locks Flow test hyd system( Ref. WSM)	Yes
Operational inspection controls and safety locks Horn hazard & warning devices	Yes
Operational inspection controls and safety locks Hour & tachometer	Yes
Operational inspection controls and safety locks Hydraulic auxiliary operation	Yes
Operational inspection controls and safety locks Instruments & Gauges	Yes
Operational inspection controls and safety locks Lights - Interior	Yes
Operational inspection controls and safety locks- Lights head,signal, stop & work	Yes
Operational inspection controls and safety locks Lights-warning	Yes
Operational inspection controls and safety locks	Yes



**Australian Hammer Supplies Hire**  
Unit 3/32 Williamson Road  
Ingleburn  
NSW 2565

Main relief pressure check: PSI =

Operational inspection controls and safety locks	No	Yes
coolant leaks		

Operational inspection controls and safety locks	No	Yes
exhaust leaks		

Operational inspection controls and safety locks	No	Yes
fuel system leaks		

Operational inspection controls and safety locks	No	Yes
oil leaks		

Operational inspection controls and safety locks		Yes
Quick hitch		

Operational inspection controls and safety locks		Yes
Safety interlock function		

Operational inspection controls and safety locks		Yes
Seat belt operation & mounting		

Operational inspection controls and safety locks		Yes
Set clock & audio system		

Operational inspection controls and safety locks		Yes
Set service intervals		

Operational inspection controls and safety locks-		Yes
Switches & controls		

Operational inspection controls and safety locks		Yes
Verify relief valve setting (attach)		

Operational inspection controls and safety locks		Yes
Windscreen wipers & washers		

Pre cleaner, cabin filter and outer air filter take out and blow out - Actioned?		Yes
--	--	-----

Tracks check/adjust track tension		Yes
-----------------------------------	--	-----

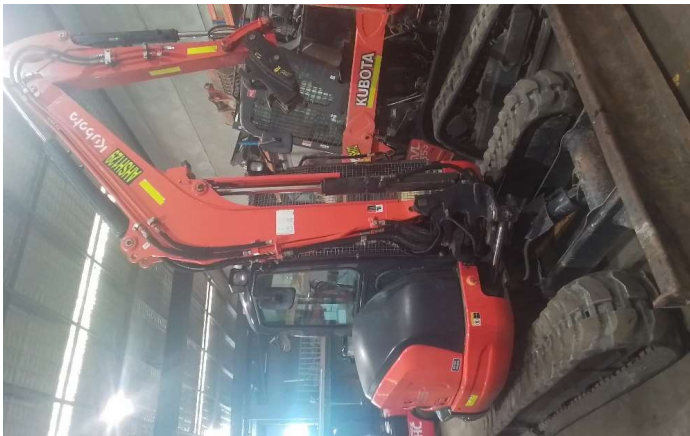


**Australian Hammer Supplies Hire**  
Unit 3/32 Williamson Road  
Ingleburn  
NSW 2565

**Plant No.**



**Overall View - Right hand side**



**Tyre Condition 1**



**Tyre Condition 2**



**Tyre Condition 3**





**Australian Hammer Supplies Hire**  
Unit 3/32 Williamson Road  
Ingleburn  
NSW 2565

**Tyre Condition 4**

